

# amir prestige



76-82 Main Western Road TAMBORINE MOUNTAIN QLD

4 🏠 3 🚗 3 🚗

PRICED TO SELL

Land 1.2ha, (3 acres)\*, 79m\* frontage with special facilities/commercial prospects  
Building areas 657m2\* under roof, plus 52m2\* open timber decks

**Type** : Acreage/Semi-Rural  
**Building Size** : 76 sqm  
**Land Size** : 12140.6 sqm  
**View** : <https://www.amirprestige.com.au/sale/ql/gold-coast/tamborine-mountain/residential/acreagesemirural/7253417>

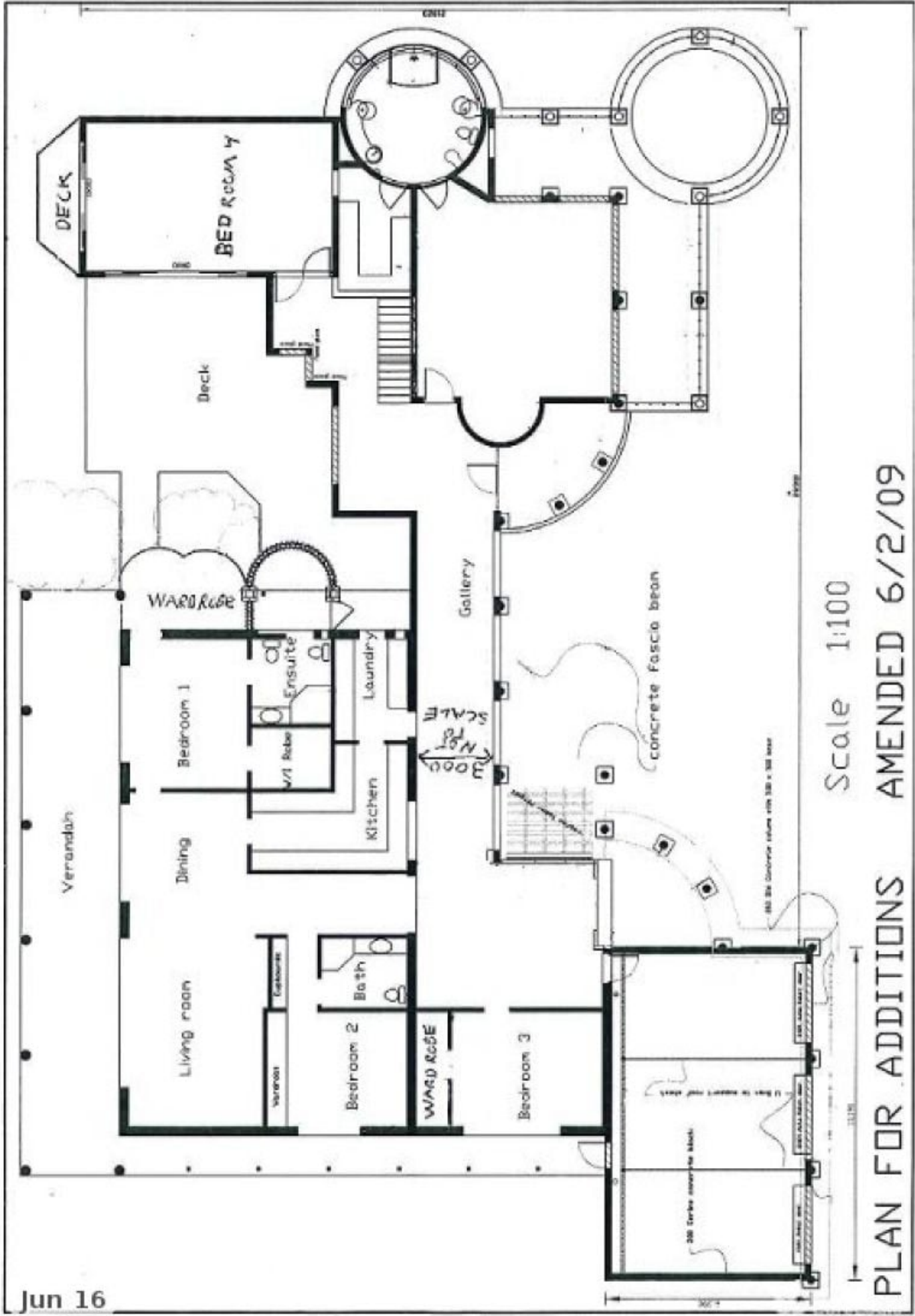
We live in a period of geometry in architecture, simple lines, concise forms, and functionality of space.

Among the modern projects, those that can boast a true personality come across.

"Laurel Lane" - an exceptional property, masterful in design, mediterranean flair and modern luxury are uniquely

[For full version visit the website](#)

<https://www.amirprestige.com.au>  
Gold Coast Luxury Real Estate



Scale 1:100

PLAN FOR ADDITIONS AMENDED 6/2/09

Jun 16