

amir prestige



39A Paradise Island SURFERS PARADISE QLD

4 🏠 3 🚗 2 🚗

Executive style waterfront duplex positioned east to water with stunning close-up skyline views. Perfectly located in a private inner city enclave within walking distance to the heart of Surfers Paradise and its cafes, nightlife, shops and beach.

- East facing with stunning city views & private waterway
- 4 oversized bedrooms, two with ensuites, guest suite on ground floor
- Open plan kitchen with stone bench tops and European appliances
- Spacious living areas opening out to alfresco entertaining & views
- 3 luxurious bathrooms with quality fixtures and fittings
- High 9 foot ceilings, feature staircase, double lock up

Type : Semi Detached

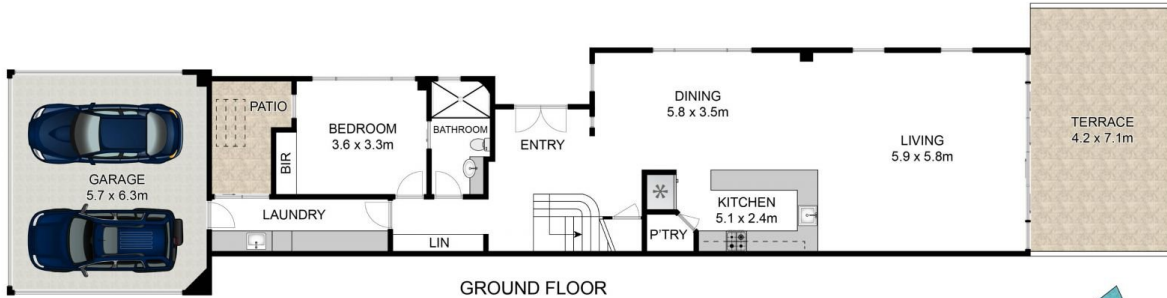
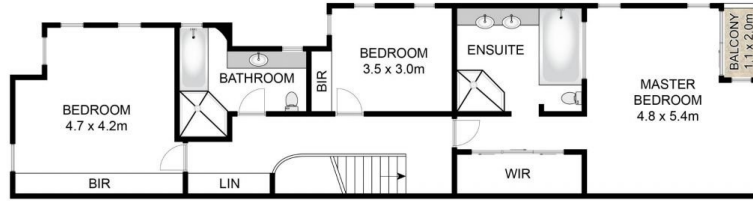
View : <https://www.amirprestige.com.au/sale/qld/gold-coast/surfers-paradise/residential/semi-detached/7260591>



Isaac & Maria Genc
0416 222 262

[For full version visit the website](https://www.amirprestige.com.au)

<https://www.amirprestige.com.au>
Gold Coast Luxury Real Estate



Approx. Internal Area 302m²

Whilst bwrn.com.au has made every attempt to ensure the accuracy of the floor plan contained here, measurements are approximate and no responsibility is taken for any error, omission, or mis-statement. This plan is for illustrative purposes only.



39A Paradise Island, Surfers Paradise

Queensland Sotheby's
INTERNATIONAL REALTY