

# amir prestige



**171 Monaco Street BROADBEACH WATERS QLD**

4 🏠 5 🚗 10 🚗

Located on a prized, north facing 2130sqm allotment on a wide section of Main River and stretching across an incredible 90m of waterfront, this spectacular trophy home enjoys the most breathtaking river and skyline views from every angle. Designed for privacy and expansive indoor and outdoor living and perfectly blends classic elegance with contemporary lifestyle inclusions. This iconic Monaco Street mansion has hosted an array of celebrities, video/film shoots and international dignitaries over the years and its easy to see why with its innovative design and extraordinary location.

- 2,130sqm north facing block, incredible 90 metres of prime river frontage
- Prestigious location in tightly held Monaco Street opposite

[For full version visit the website](https://www.amirprestige.com.au)

**Type** : House  
**Land Size** : 2130 sqm  
**View** : <https://www.amirprestige.com.au/sale/qld/gold-coast/broadbeach-waters/residential/house/7260605>



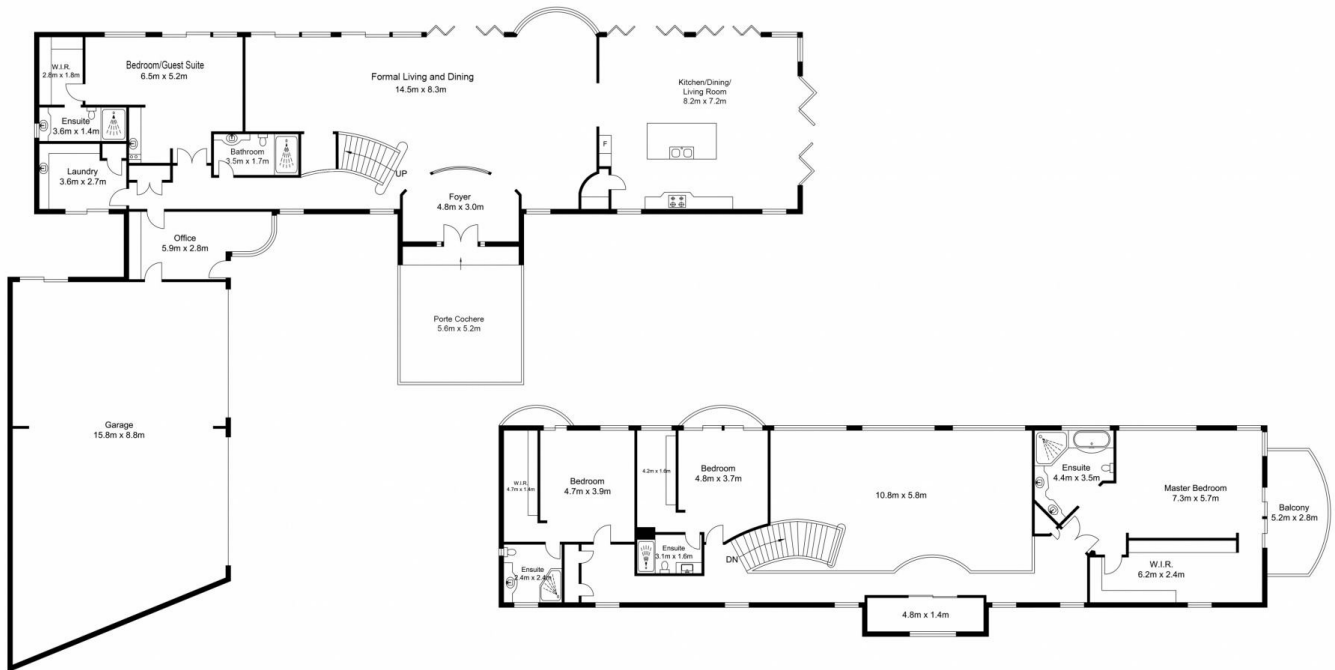
**Isaac & Maria Genc**  
**0416 222 262**

<https://www.amirprestige.com.au>  
Gold Coast Luxury Real Estate

Contact:  
Isaac & Maria Genc  
0416 222 282

171 Monaco Street  
Broadbeach Waters

Genc&Co



Ground Floor  
Approximate Floor Area  
398.41 sq. m

TOTAL APPROX FLOOR AREA 643.27 SQ. M.  
TOTAL APPROX LAND AREA 2130.0 SQ. M.

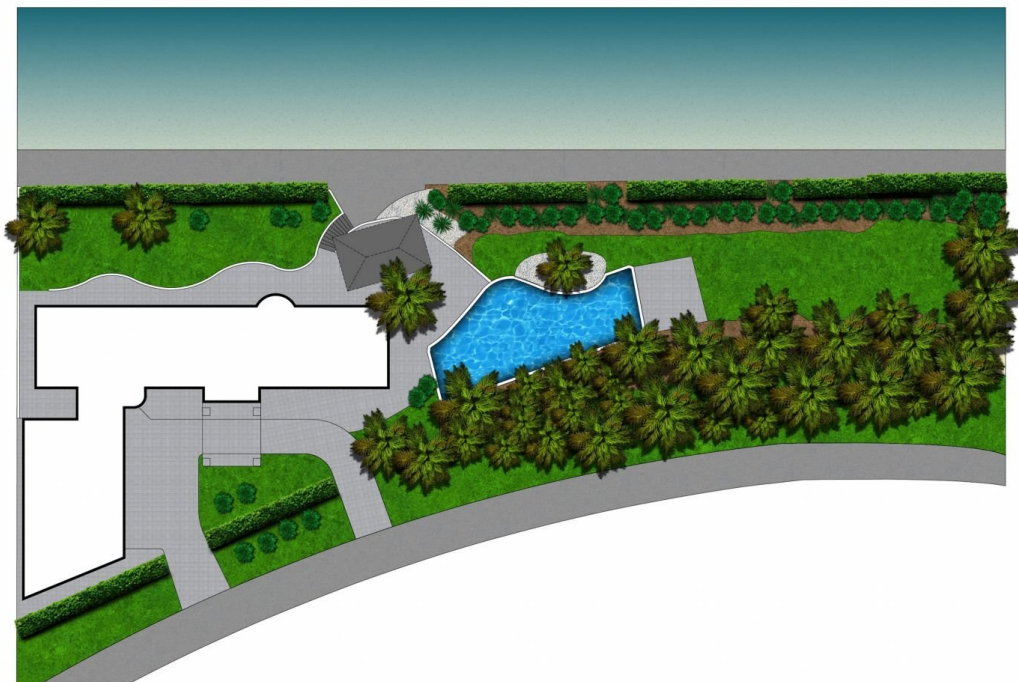
Whilst every attempt has been made to ensure the accuracy of the floor plan contained here, measurements of doors, windows, rooms and any other items are approximate and no responsibility is taken for any error, omission or mis-statement. This plan is for illustrative purposes only and should be used as such by any prospective purchaser.  
[www.zome.com.au](http://www.zome.com.au)

First Floor  
Approximate Floor Area  
244.86 sq. m

Contact:  
Isaac & Maria Genc  
0416 222 282

171 Monaco Street  
Broadbeach Waters

Genc&Co



Ground Floor  
Approximate Floor Area  
398.41 sq. m

TOTAL APPROX FLOOR AREA 643.27 SQ. M.  
TOTAL APPROX LAND AREA 2130.0 SQ. M.

Whilst every attempt has been made to ensure the accuracy of the floor plan contained here, measurements of doors, windows, rooms and any other items are approximate and no responsibility is taken for any error, omission or mis-statement. This plan is for illustrative purposes only and should be used as such by any prospective purchaser.  
[www.zome.com.au](http://www.zome.com.au)

First Floor  
Approximate Floor Area  
244.86 sq. m