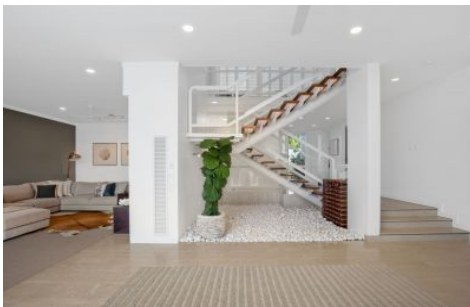


amir prestige



39 Blair Athol Crescent SORRENTO QLD

5 3 2

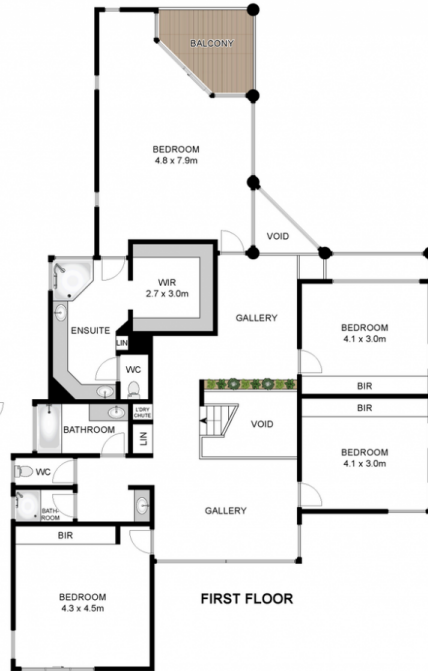
4/5 bedroom two-storey Sorrento home boasting captivating skyline views of Surfers Paradise from an enviable north-east waterfront position only minutes to the main river. Offering an alfresco lifestyle with a poolside timber deck overlooking uninterrupted views across rare wide water, jetty and sandy beach. Standout features include solid double brick construction, suspended concrete slab, high ceilings throughout, generous bedrooms and a luxury king size master with private balcony and stunning views. This home boasts size and a premium location and has plenty of scope to further personalise to add more value.

Land Size : 792 sqm

View : <https://www.amirprestige.com.au/sale/qld/gold-coast/sorrento/residential/house/7260669>

- Spacious two-storey waterfront home with north-east aspect on 792sqm block
- Located on one of Sorrentos top streets with captivating wide water and skyline views

<https://www.amirprestige.com.au>
Gold Coast Luxury Real Estate



Approx. Internal Area 312m²
Approx. Land Size Area 792m²

Whilst bwrn.com.au has made every attempt to ensure the accuracy of the floor plan contained here, measurements are approximate and no responsibility is taken for any error, omission, or mis-statement. This plan is for illustrative purposes only.



39 Blair Athol Crescent, Sorrento

Genc&Co