




amir prestige



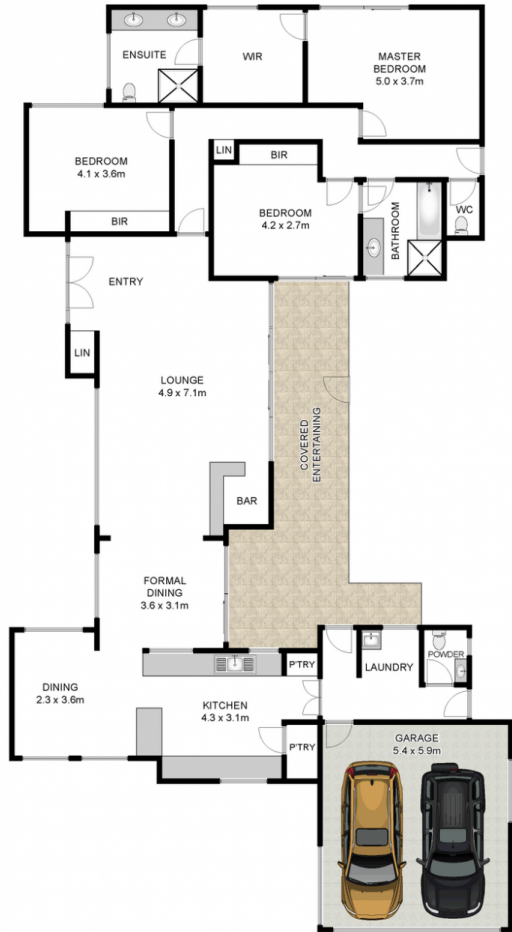
64 Boomerang Crescent SORRENTO QLD

3  2  2 

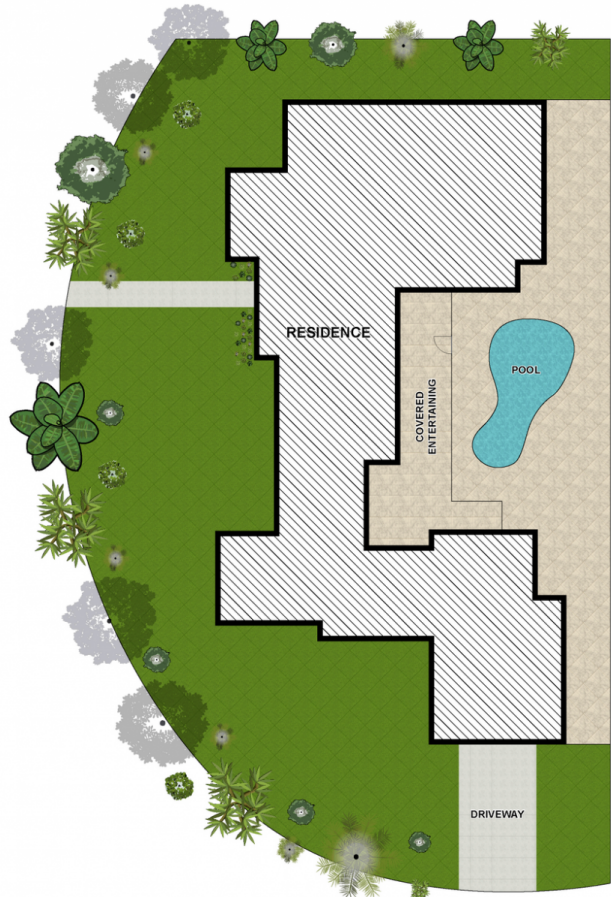
Offered to the market for the first time in 31 years, this entry level low set home is situated on a large corner block of 782sqm in exclusive Isle of Sorrento and is ready for an astute buyer/developer to completely personalize or knock down and build their dream home. Highly sought after inner city location only mins to Surfers, Broadbeach, elite schools and other amenities.

Land Size : 782 sqm
View : <https://www.amirprestige.com.au/sale/qld/go-ld-coast/sorrento/residential/house/7260712>

- Entry level renovator on a large 782sqm corner block in the exclusive enclave of isle of Sorrento
- Original 3 bed, 2 bathroom low set home with east facing pool
- Highly sought after premium location surrounded by multi-million homes
- Ready to personalize and modernize and/or extend to capture skyline views
- Budding developers could consider re-building & taking



GROUND FLOOR



SITE PLAN

Approx. Area 195m²
 Approx. Land Size 782m²

Whilst bwrm.com.au has made every attempt to ensure the accuracy of the floor plan contained here, measurements are approximate and no responsibility is taken for any error, omission, or mis-statement. This plan is for illustrative purposes only.



64 Boomerang Crescent, Sorrento

Genc&Co