

# amir prestige



146 Mcgettigans Lane Ewingsdale NSW

5 🏠 4 🚗 5 🚗

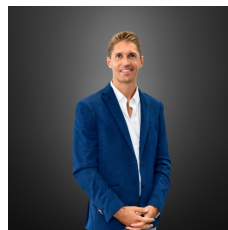
Nestled amongst ancient fig trees and swaying palms, in the hidden sanctuary of Ewingsdale, lies "Terra Rossa".

'Terra Rossa' (Red Earth) is set in a rural landscape with deep red volcanic soil, and enjoys space and privacy, bordering expansive fields and farmland, without the isolation of country living.

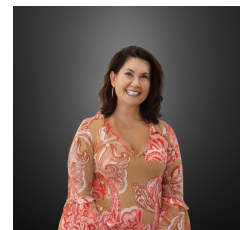
Simplicity is key here and Terra Rossa takes advantage of this with its meandering creek and many fruit & nut trees, and yet only minutes from the famous and beautiful beaches of Byron Bay.

The home is freshly painted and ready for it's new owners to move straight into. With various accommodation options, including the approved cottage, this property makes for an excellent country home with scope to develop it, or for

**Price** : \$ 2,450,000  
**Land Size** : 8002 sqm  
**View** : <https://www.amirprestige.com.au/sale/nsw/northern-rivers/ewingsdale/residential/house/7727887>



**Oliver Hallock**  
02 6680 7207



**Colleen Brunt**  
02 6680 7207





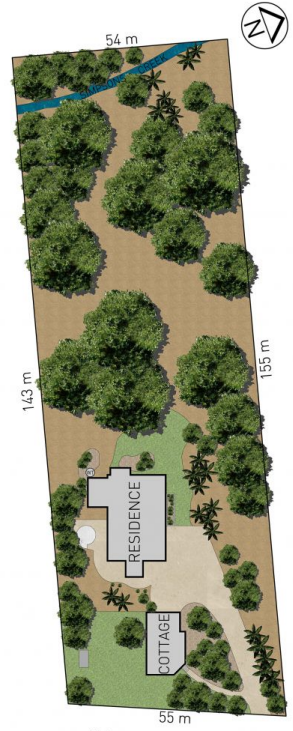
RESIDENCE  
FIRST FLOOR



RESIDENCE  
GROUND FLOOR



COTTAGE



MCGETTIGANS LANE  
SITE PLAN



Indicative only. Dimensions are approximate. All information contained herein is gathered from sources we believe to be reliable. However we cannot guarantee its accuracy and interested persons should rely on their own enquiries.



## 1.69 acres

Internal: 267 m<sup>2</sup> | External: 115 m<sup>2</sup> | Total: 382 m<sup>2</sup>