

amir prestige



2/1285 Gold Coast Highway Palm Beach QLD

3  2  2 

Seaside Sophistication: Absolute Beachfront Elegance in Palm Beach
'Shoreline on the Beach' 2/1285 Gold Coast Highway, Palm Beach

Coastal Elegance Beckons at 'Shoreline on the Beach'
Discover the epitome of coastal luxury at 2/1285 Gold Coast Highway, Palm Beach. This three-bedroom, north-east facing absolute beachfront residence offers an unparalleled panoramic view that captures a majestic coastline, providing a breath-taking backdrop to your Palm Beach lifestyle.

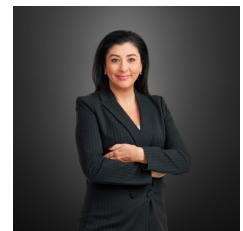
Indulge in opulence with this newly renovated, full-floor apartment occupying the entire second floor within an

[For full version visit the website](https://www.amirprestige.com.au)

Type : Unit
Price : \$ 2,825,000
Building Size : 193 sqm
View : <https://www.amirprestige.com.au/sale/ql-d/gold-coast/palm-beach/residential/unit/7884548>

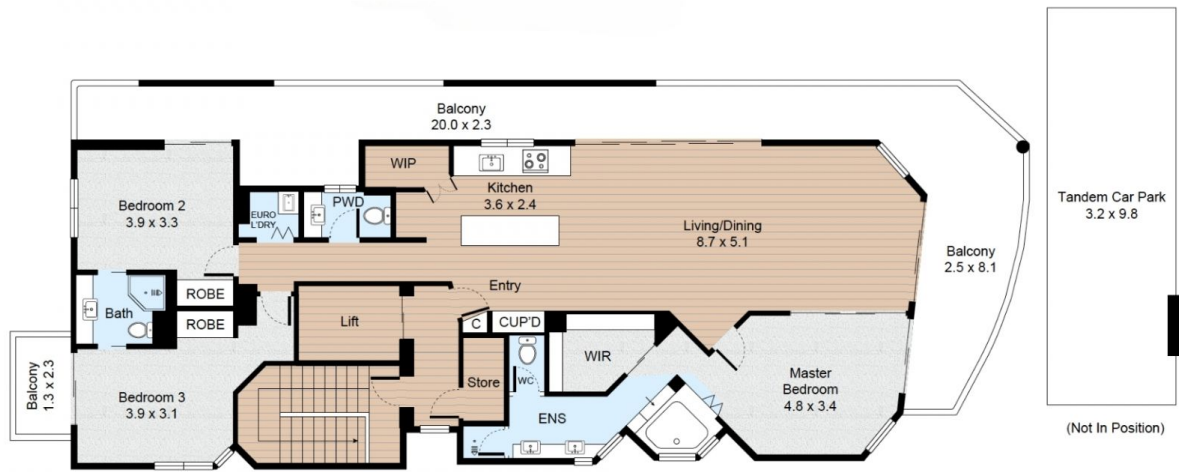


Nat King
07 5555 1600



Paulette Koriacos
07 5555 1600

<https://www.amirprestige.com.au>
Gold Coast Luxury Real Estate



Whilst Amir Prestige Property Agents have made every attempt to ensure the accuracy of all measurements of this floor plan, Amir Prestige take no responsibility for any errors, omissions, or mis-statement. This plan is for illustrative purposes only.

Nat King | 0403 042 677

amir prestige

Paulette Koriacos | 0456 778 678