

# amir prestige



**2293 Gold Coast Highway Mermaid Beach QLD**

4 🏠 2 🚗 3 🚗

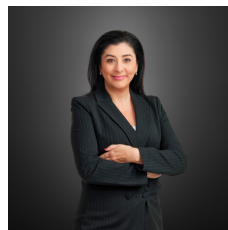
2293 Gold Coast Highway, Mermaid Beach

No Body Corporate, Best value for money duplex pair beachside in Mermaid Beach! Smart investors take note as this High-Yield Investment Duplex Pair with Strong Rental Returns and Growth Potential will be sold- Act Fast!

**Price** : Selling Now  
**Land Size** : 435 sqm  
**View** : <https://www.amirprestige.com.au/sale/qld/go-ld-coast/mermaid-beach/residential/house/8030107>

Whether you plan to live in one unit and rent out the other or hold onto the property and watch your investment grow, this duplex pair offers unique and versatile opportunities. Convert both units into a four-bedroom home, add a pool, and maximize your investment.

Set on a 435m<sup>2</sup> land parcel, this property is perfectly positioned to enjoy the best of beachside living. The vibrant Nobbys Beach precinct is known for its lively atmosphere, excellent amenities, and close-knit community, making it



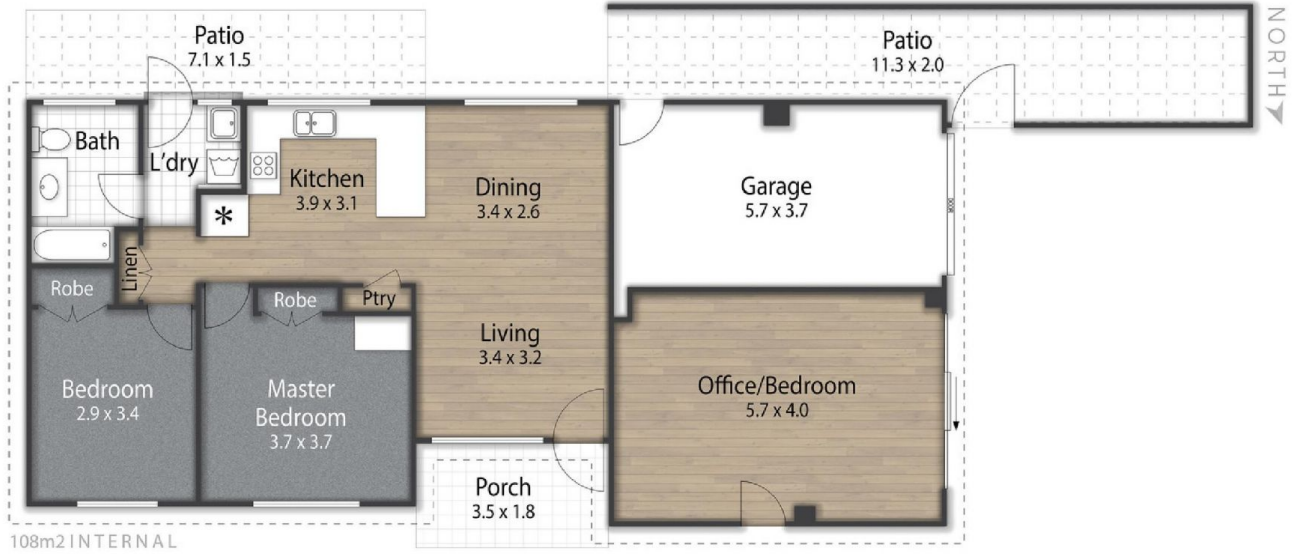
**Paulette Koriacos**  
07 5555 1600



**Nat King**  
07 5555 1600



# UNIT 1/ 2293 GOLD COAST HIGHWAY, MERMAID BEACH



1/2293 Gold Coast Highway, Mermaid Beach

BED 2 BATH 1 CAR 1

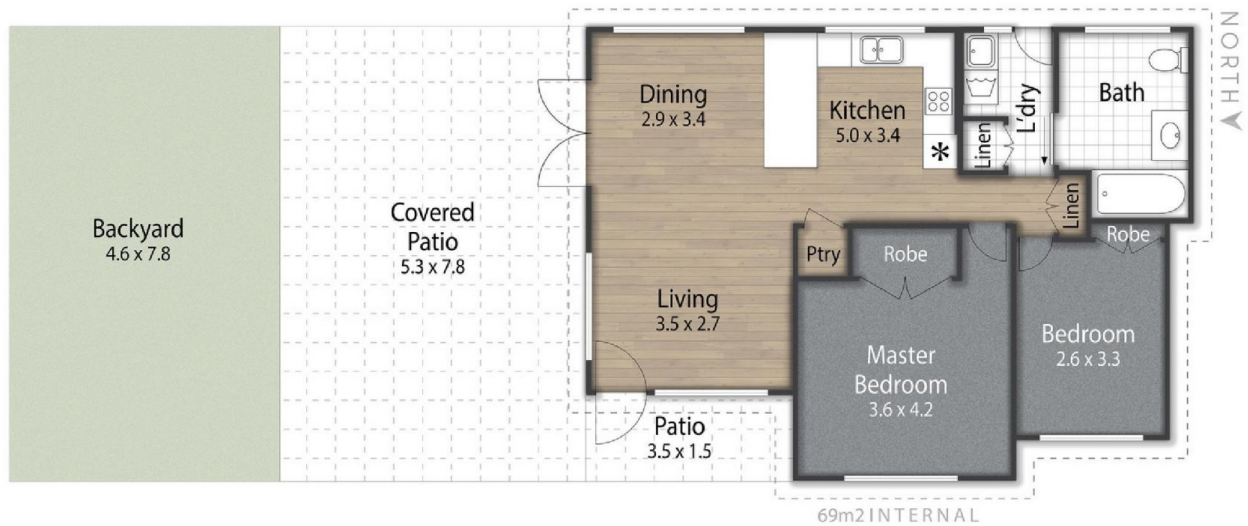
Internal: 108 m<sup>2</sup> | External: 37 m<sup>2</sup> | Approx Total: 145 m<sup>2</sup>

amir prestige

Whilst every attempt has been made to ensure the accuracy of the floor plan contained here, measurements of doors, windows, rooms and any other item are approximate and no responsibility is taken for any error, omission, or misstatement. This plan is for illustrative purposes only and should only be used as such by any prospective purchaser.



# UNIT 2/ 2293 GOLD COAST HIGHWAY, MERMAID BEACH



2/2293 Gold Coast Highway, Mermaid Beach

BED 2 BATH 1

Internal: 69 m<sup>2</sup> | External: 47 m<sup>2</sup> | Approx Total: 116 m<sup>2</sup>

amir prestige

Whilst every attempt has been made to ensure the accuracy of the floor plan contained here, measurements of doors, windows, rooms and any other item are approximate and no responsibility is taken for any error, omission, or misstatement. This plan is for illustrative purposes only and should only be used as such by any prospective purchaser.





1&2/2293 Gold Coast Highway, Mermaid Beach

BED 2/2 BATH 1/1 CAR 1

Unit 1 - Internal: 108 m<sup>2</sup> | External: 37 m<sup>2</sup>  
 Unit 2 - Internal: 69 m<sup>2</sup> | External: 47 m<sup>2</sup>

Land Size: 438m<sup>2</sup>

amir prestige

Whilst every attempt has been made to ensure the accuracy of the floor plan contained here, measurements of doors, windows, rooms and any other item are approximate and no responsibility is taken for any error, omission, or misstatement. This plan is for illustrative purposes only and should only be used as such by any prospective purchaser.

