

amir prestige



1401/112 The Esplanade Burleigh Heads QLD

3  **3**  **2** 

Discover elevated beachfront living at its finest in this sophisticated half-floor apartment within the exclusive 'Natura' building, perfectly situated on The Esplanade in vibrant Burleigh Heads.

Positioned on the 14th floor of a prestigious 17-story residential-only building, this east-facing residence offers breathtaking, dual-aspect views. To the east, enjoy uninterrupted panoramas of the Pacific Ocean, framed by the iconic Norfolk Pines along the Esplanade, while to the south, the stunning Burleigh Hill adds a natural touch to the landscape.

Crafted by Brisbane's renowned 'bureau proberts,' this apartment features a spacious, open-plan design that seamlessly blends the kitchen, living, and dining areas. Every detail has been meticulously chosen, from the

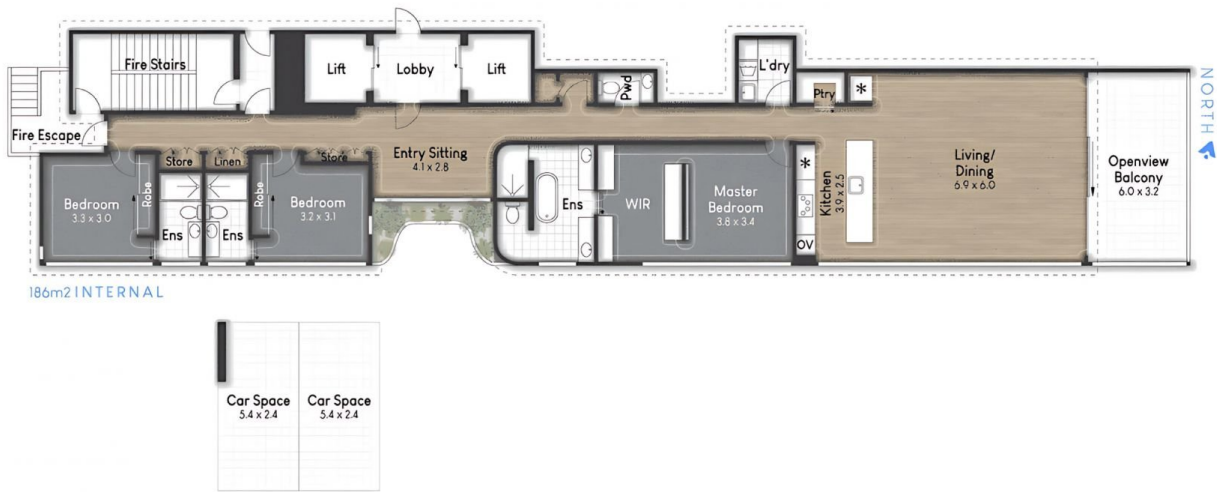
Price : Auction
Building Size : 211 sqm
View : <https://www.amirprestige.com.au/sale/ql/gold-coast/burleigh-heads/residential/apartment/8118618>



Sean Weill
(07) 5555 1600



Omar Mian
07 5555 1600



AMIR MIAN 0401 470 499 OMAR MIAN 0428 553 883 SEAN WEILL 0432 749 677

amir prestige

Whilst Amir Prestige Property Agents have made every attempt to ensure the accuracy of all measurements of this floor plan, Amir Prestige take no responsibility for any errors, omissions, or mis-statement. This plan is for illustrative purposes only.