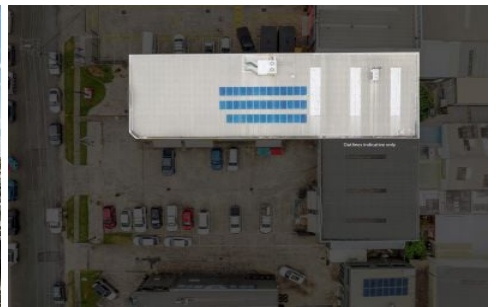


amir prestige



1/23 Central Drive Burleigh Heads QLD

16 

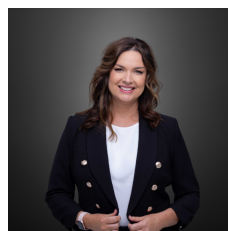
Exclusive Agent, Teresa Skordou of Amir Prestige Commercial is pleased to present a rare opportunity to secure a front-facing warehouse opposite the busy Bermuda Street, one of the Gold Coast's key arterial roads!

With ample on-site parking and excellent visibility, this property is perfect for businesses looking to make a statement.

- * 656m2
- * Open plan Warehouse & showroom
- * Signage opportunity on building and front pylon
- * Kitchen & bathroom amenities
- * Rear roller door access
- * 3 Phase power
- * 16 allocated car parks

[For full version visit the website](https://www.amirprestige.com.au/lease/gold-coast/burleigh-heads/commercial/industrial/8144863)

Type	: Industrial
Price	: Contact Agent
Building Size	: 656 sqm
View	: https://www.amirprestige.com.au/lease/gold-coast/burleigh-heads/commercial/industrial/8144863



Teresa Skordou
(07) 5531 0273

<https://www.amirprestige.com.au>
Gold Coast Luxury Real Estate