

# amir prestige



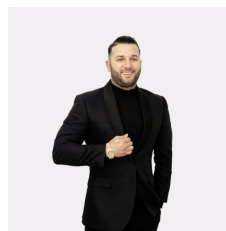
## 14 View Street Burleigh Heads QLD

4 🏠 3 🚗 2 🚘

Positioned in one of Burleigh Head's most prestigious enclaves, this stunning residence offers breathtaking views stretching from the glittering skyline of Surfers Paradise to the endless expanse of the Pacific Ocean. Spanning three levels of sophisticated design, this home is a haven of versatility, and relaxation, featuring a host of high-end inclusions that cater to a premium lifestyle.

The property is designed with flexibility in mind, boasting a fully self-contained top-floor penthouse with private external access. Perfect for multi-generational living or as a lucrative rental opportunity, the penthouse enjoys panoramic views from its oversized terrace and sun-drenched living area. With a Bosch-equipped kitchen, a sumptuous master suite with walk-in robe and spa, plus

**Type** : House  
**Price** : Auction  
**Building Size** : 388 sqm  
**Land Size** : 473 sqm  
**View** : <https://www.amirprestige.com.au/sale/qualified/gold-coast/burleigh-heads/residential/house/8164713>

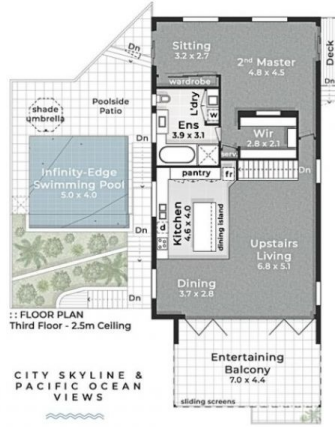


**Ben Ada**  
0494 926 070

[For full version visit the website](https://www.amirprestige.com.au)

<https://www.amirprestige.com.au>  
Gold Coast Luxury Real Estate

Land: 473m<sup>2</sup>\*  
 Internal: 388m<sup>2</sup>\*  
 Exterior: 124m<sup>2</sup>\*  
 Total 512m<sup>2</sup>\*



POTENTIAL DUAL LIVING

- LEGEND**
1. Driveway Parking
  2. Entry Porch
  3. Entertaining Deck
  4. Entertaining Balcony
  5. Solar Hot Water
  6. PV Solar Panels
  7. Infinity-Edge Swimming Pool
  8. Outdoor Shower
  9. Poolside Patio w/ Shade Umbrella
  10. Separate Entry



BEN ADA 0404 926 070

\*Whilst Amir Prestige Property Agents have made every attempt to ensure the accuracy of all measurements of this floor plan, Amir Prestige take no responsibility for any errors, omissions, or mis-statement. This plan is for illustrative purposes only.\*

**amir prestige**